



4th Annual SUSTAINABILITY CONFERENCE:

CURRENT TRENDS IN SUSTAINABLE
COMMUNITIES

DATE:

September 22, 2011

TIME

8 a.m. - 4 p.m.

LOCATION:

Phipps Conservatory
One Schenley Park
Pittsburgh, PA 15213

COST:

Members - \$120
Non-Members - \$150
Students - \$30
Breakfast and Lunch included

Early Registration Discount:

Members and Non-Members:
Register before September 1st
and SAVE \$20 OFF the Respective
Price Above

Register at
www.asce-pgh.com or
with **Bob Dengler** at
412.922.5575 or
rdengler@GFNET.com



The Pittsburgh Section of the American Society of Civil Engineers (ASCE), Environmental and Water Resources Institute (EWRI), and Sustainable Pittsburgh are proud to announce our Annual daylong Sustainability Conference. This year's conference surely won't disappoint. The day will begin with this year's keynote speaker, Pennsylvania Department of Environmental Protection Secretary Michael Krancer, and will culminate with a tour of Phipp's Conservatory's current construction project the Center for Sustainable Landscapes. Topics to be covered are the recently released ASCE Institute for Sustainable Infrastructure's Sustainability Ratings for Engineering Projects, a discussion on the Marcellus Shale industries Community Impacts and Opportunities, and a presentation on the world's first zero-carbon city; Masdar City, United Arab Emirates.

*So please join us for this daylong event.
All attendees at the event will receive
a certificate for 6.0 Professional
Development Hours.*

**We look forward to
your attendance!!**



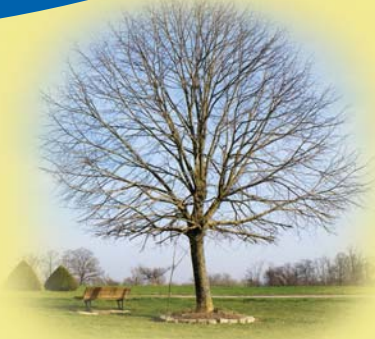


Thursday, September 22, 2011 - Phipps Conservatory

4th Annual SUSTAINABILITY CONFERENCE:

CURRENT TRENDS IN SUSTAINABLE COMMUNITIES

AGENDA



8:00 - 8:45	Registration/Breakfast
8:45 - 9:30	PADEP Secretary - State of the Union Keynote Speaker: Michael Krancer <i>Secretary of the Pennsylvania Department of Environmental Protection</i>
9:30 - 10:00	ASCE's Sustainable Report Card Revealed "The Institute for Sustainable Infrastructure: Sustainability Rating Systems and Promoting Sustainable Performance for Engineering Projects" Peter D Binney, PE, <i>Director of Sustainable Infrastructure at Merrick & Company, Aurora, Colorado; Chair, Technical Committee and Past Board Member, Institute for Sustainable Infrastructure</i>
10:00 - 10:15	Break
10:15 - 10:45	ASCE's Sustainable Report Card Practice "Demonstration Projects Using Institute of Sustainable Infrastructure's Rating System" Peter D Binney, PE, <i>Director of Sustainable Infrastructure at Merrick & Company, Aurora, Colorado; Chair, Technical Committee and Past Board Member, Institute for Sustainable Infrastructure</i>
10:45 - 11:15	Marcellus Shale Impacts and Opportunities "Community Impacts and Opportunities in Pennsylvania Due to Marcellus Shale Industry" Jason L. Weigle, Ph.D., <i>Professor in Community and Economic Development at Pennsylvania State University</i>
11:15 - 11:45	Marcellus Shale Impact Fees or Not to Be? "Community Sustainability and the Role of Impact Fees in the Marcellus Shale Industry" Jan Jarrett, <i>President and CEO at PennFuture, Harrisburg, Pennsylvania</i>
11:45 - 1:00	Lunch
1:00 - 1:30	Sustainable Project Financing "Funding Sustainable Projects through Municipal Bonds" Chris Perlitz, <i>Infrastructure Financing Manager at Municipal Capital Markets, Denver, Colorado</i>
1:30 - 2:00	Sustainable Trends in the Transportation Sector "PennDOT's State Smart Transportation Initiative" Dan Cessna, <i>PennDOT District 11 Executive</i>
2:00 - 2:15	Break
2:15 - 3:00	International Masdar City "World's First Zero Carbon City: Sustainable Infrastructure in Masdar City, United Arab Emirates" Jane Barron, <i>Project Manager at Mott MacDonald for the Masdar Sitewide Infrastructure Design Consultancy, London, United Kingdom</i>
3:00 - 4:00	Local Sustainability in Practice Presentation and Tour: "The Phipps Conservatory Center for Sustainable Landscapes: One of the World's First Living Buildings" Jason Wirick, <i>Director of Facilities and Sustainability at Phipps Conservatory</i>





Thursday, September 22, 2011 - Phipps Conservatory

4th Annual SUSTAINABILITY CONFERENCE:

CURRENT TRENDS IN SUSTAINABLE COMMUNITIES

SPEAKER BIOGRAPHIES

Michael Krancer



Secretary of the Pennsylvania Department of Environmental Protection

Michael Krancer was nominated by Governor Tom Corbett to be the Secretary of Environment Protection (DEP) on January 18, 2011. The nomination was confirmed by the Pennsylvania State Senate on April 26, 2011.

Until he was nominated by Governor Tom Corbett to be Pennsylvania's Acting Secretary of the Department of Environmental Protection (DEP), Mike Krancer was a Judge on the Pennsylvania Environmental Hearing Board (EHB). The EHB is the state-wide trial/apellate court for environmental cases which tries appeals from actions of the DEP. He was first nominated to serve as a Judge on the EHB by Pennsylvania Governor Tom Ridge in October 1999. The Senate of Pennsylvania confirmed the nomination and Mr. Krancer took the oath of office in November 1999. In February 2003, Judge Krancer was named by Pennsylvania Governor Edward G. Rendell as Chief Judge and Chairman. Before becoming a Judge, Mr. Krancer was a litigation partner at the Dilworth and Blank Rome law firms in Philadelphia. His practice involved complex commercial, white collar criminal, and environmental litigation. Judge Krancer stepped down from the EHB in April 2007 to devote full time to his candidacy for Justice of the Pennsylvania Supreme Court. Acting Secretary Krancer became an Assistant General Counsel for the Exelon Corporation in June 2008. While with Exelon he provided legal counsel in the areas of environmental, health and safety compliance and litigation. He also worked on energy policy matters and with the company's government relations team. He was asked by Governor Rendell to return to the EHB as a Judge in 2009.

Peter Binney, P.E.



Director of Sustainable Infrastructure: Sustainability Rating System and Promoting Sustainable Performance for Engineering Projects

Peter Binney, PE, MASCE has over 35 years of experience in civil engineering projects throughout the US and internationally. He is currently Director of Sustainable Infrastructure for Merrick and Company Aurora, CO and was appointed to the Board of the Institute for Sustainable Infrastructure (ISI) by the American Society of Civil Engineers when it was first incorporated; he is currently supporting ISI in the development of various sustainable engineering rating systems. He has worked for consulting engineering companies as well as directing a major water utility where he conceived and directed the construction of a \$700 million planned indirect potable water system on a fast track delivery schedule. The project exhibits many of the traits of a successful sustainable civil engineering project and has been recognized by ACEC 2011 Honors Engineering Excellence Award and by APWA 2011 Public Works Project of the Year – Large Environmental Project. He specializes in water and natural resources projects and supports a number of public and private clients in the planning and delivery of complex and regulatory/ public-sensitive infrastructure projects. He holds post-graduate degrees in Civil Engineering and in Water Resources Engineering and is a member of ASCE and AWWA.

Jason L. Weigle, Ph. D.



Professor in Community and Economic Development Due to Marcellus Shale Industry

Dr. Weigle is an Instructor in Community and Economic Development at Penn State and a consulting sociologist specializing in education and research on the social and community impacts related to Marcellus Shale Natural gas development. Jason received his Ph.D. in Rural Sociology and Human Dimensions of Natural Resources and the Environment from Penn State, where his research focused on perceptions of Marcellus Shale Natural Gas development and how these perceptions influence action within communities. Currently his research and consulting focus on population and community change in response to growth driven by natural gas development. Jason has worked for both state and county government and has extensive experience in solid and hazardous waste management as well as water quality monitoring and watershed management. Jason and his family live in Wellsboro, PA, which is seeing significant impacts from natural gas development.

SPEAKER BIOGRAPHIES (Continued...)

Jan Jarrett



President and CEO at PennFuture, Harrisburg, Pennsylvania

Jan Jarrett is President and CEO of Citizens for Pennsylvania's Future (PennFuture). As President of PennFuture, Jarrett works with a staff of 25 in offices in Harrisburg, Philadelphia, Pittsburgh, West Chester and Scranton.

Jarrett joined PennFuture when it was founded in 1998. She has earned the respect of leaders in the environmental and conservation community by leading successful campaigns to gain voter approval of the Growing Greener bond, adoption of the state rule requiring power plants to reduce mercury pollution, adoption of the Pennsylvania Clean Vehicle program, enactment of the recent \$650 million alternative energy package, passage of the Pennsylvania Climate Change Act and more.

She has more than 20 years of experience working in Pennsylvania on environmental and conservation causes. Before joining PennFuture, she worked at the Chesapeake Bay Foundation as its Grassroots coordinator. After that she led an alliance that ensured environmental interests were represented before proceedings at the Pennsylvania Public Utility Commission. Jarrett also sits on the board of directors for the State Environmental Leadership Program, a national network of state-based environmental advocacy organizations. Jarrett is a native of Pennsylvania and has a bachelor of social sciences from Penn State University.

Chris Perlitz



Infrastructure Financing Manager at Municipal Capital Markets, Denver, Colorado

Christopher Perlitz has over 15 years experience in the public and private sectors in business development, finance, and business modeling. He has experience with Federal and State loan programs for Broadband, Energy, and the Water/Wastewater Utilities with a track record of innovating business in emerging markets. He was involved in one of the first deployments of IPTV networks, wireless VolP, and several renewable energy projects. He holds a Bachelor of Science Degree from the University of Colorado with graduate work around the USDA/Rural Development programs. He is an active member of the National Broadband Strategy Coalition and several "Green" non-profit organizations and in the process of developing a program utilizing the capital markets and private equity to maximize Federal Gov't grant and loan programs.

Dan Cessna



District Executive at PENNDOT District 11

H. Daniel Cessna, P.E., was appointed District Executive for the Pennsylvania Department of Transportation, Engineering District 11-0 on May 13, 2005. District 11 encompasses 2,167 miles of roads and 1,773 bridges in Allegheny, Beaver and Lawrence Counties in addition to the Fort Pitt, Liberty, and Squirrel Hill Tunnels in Allegheny County. District 11 employs 805 and has an annual operating budget of \$400 million.

Mr. Cessna has been with the Department since 1992. He has held a variety of management positions at both the county and district level and in the three functional areas of PENNDOT: maintenance, design, and construction. Prior to coming to District 11, he was the Assistant District Executive for Design in District 10 headquartered in Indiana, PA. Cessna also served as a Construction Project Manager, Assistant Indiana County Maintenance Manager, Jefferson County Maintenance Manager, and Assistant Construction Engineer all within District 10.

Jane Barron



Project Manager at Mott MacDonald for the Masdar Sitewide Infrastructure Design Consultancy, London, United Kingdom

Jane has many years of experience in civil, environmental and sustainable engineering. She is a Chartered Engineer and Chartered Environmentalist. She has been a Council Member for the Institution of Civil Engineers and the Institution of Chartered Water and Environmental Management for many years. She has been involved in major infrastructure projects in the UK including the Channel Tunnel, the Channel Tunnel Rail Link and Crossrail - the cross-London rail link. Jane has been project managing Mott MacDonald's site wide infrastructure design commission at Masdar City as they seek to design innovative, sustainable solutions in a challenging economic climate.

Jason Wirick



Director of Facilities and Sustainability at Phipps Conservatory

As director of facilities and sustainability for Phipps Conservatory and Botanical Gardens in Pittsburgh, Pa., Jason Wirick advances sustainable design ideals, maintains and pursues safe, healthy and sustainable operating management practices, and leverages the benefits of naturalizing the built environment for one of America's greenest public gardens. He holds a bachelor of science degree from Virginia Tech University and a master of business administration degree, with a focus on corporate sustainability and social responsibility, from Duquesne University. A LEED® Accredited Professional, Wirick has supervised hundreds of contractors on award-winning construction projects and facilitated design development with architects, developers, designers, engineers, contractors, and consultants. Wirick will be presenting on Phipps' Center for Sustainable Landscapes, a living building that is now under construction, and expected to meet or exceed the three highest green standards: the Living Building Challenge, LEED® Platinum and SITES™ Certification for landscapes.



4th Annual SUSTAINABILITY CONFERENCE: CURRENT TRENDS IN SUSTAINABLE COMMUNITIES

EVENT SPONSORS

Platinum:



Hatch Mott
MacDonald

Gold:

